



Stiffel®

American Manufacturer of Custom Fixtures and Lamps

LITE TOPS

Fabric Pendant Fixtures
Flush Mount Fixtures
Hallway Sconces
Custom Metal Fixtures
Laser Cut Designs
Lamp Shades – Replacement / Recovers

STIFFEL

Cast Lamp Bodies
Handcrafted Shades
Custom Finishes
USB & Convenience Outlets
Bolt Downs





Custom Fabrication



American
Craftsmanship





Custom Shaded Pendant Fixtures

Any Shape
Any Scale

Custom Lampshades

Softbacks

Hardbacks

Re-Covers



The Lite Top Quote/Order Process

- Receive Quote Request or Design Concept
- Review and Develop Formal Quote
- Customer Sends PO & 50% Deposit
- Drafting Dept provides a Detailed Shop Drawing For Approval/Signatures
- Shop Drawing is Signed Off and Returned by Customer
- Production Lead Time is 4 to 6 Weeks from Date of Sign Off

Running Line



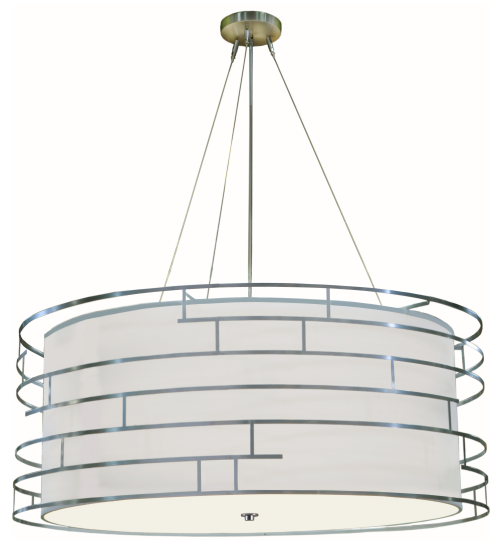
cheval condos-bethesda



Tahoe



Chelsea



Custom Drum



Tranquillo



Pods



Hgi-Sacramento



Double Drums



Softback Drums



Domes



Curve



Harness



Moderno



Cirque



Arches



Cambridge



Cage



Wired



Outline



Outline



Tahoe



Lexington



Linear



Danny Donut



Donut



Chelsea



6667



Cascade



Tranquillo



Industrial



Drums



WF-6592-X2-BB



WF-6792-1355-SN



WF-5227-5907X2-BZPA



WF-6785-X2-OB



WF-CUS20



WF-6533X-RM-MBK



WF-CUS23



WF-CUS3-115-01-OB



WF-BUBBLES-SVPC



WF-RECLAIM-OB



WF-CUS1-115-01-BK



WF-LASERTEMP3-2



WF-4



WF-6



WF-5



WF-5855



WF-5802-K138-PHB



WF-5855-C122-PHB



WF-6126-C123-PHB



WF-A013-K7092-OB



WF-6667-115-05PL-888FG



WF-6785-115-05PL-887FG



WF-6791-X1-OB



WF-6790-115-01-244X-SN

Airport Marriott – Rochester, NY



Airport Marriott – Rochester, NY



Beach House Properties – Senior Living Centers



Studio Six 5 – San Antonio Texas



Studio Six 5 – San Antonio Texas



Studio Six 5 – San Antonio Texas



Marriott TownePlace Suites Orlando at Flamingo Crossings



Westin at Times Square
New York City



Barrons Cove - New York



Hilton Garden Inn Bend Oregon

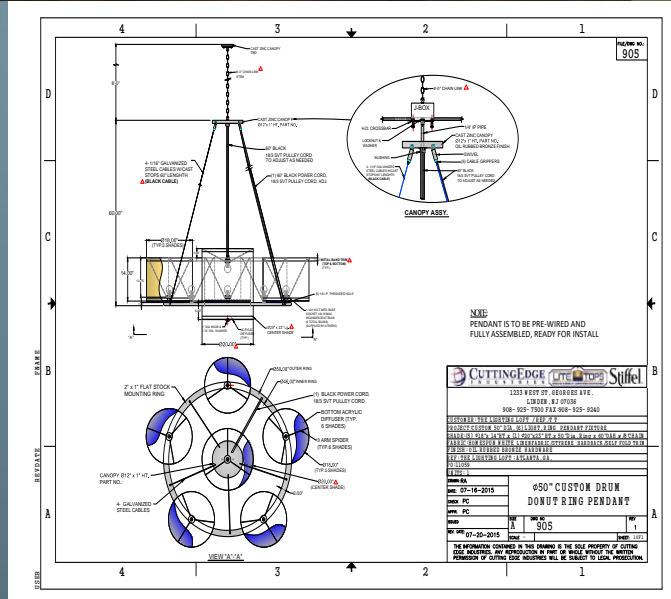


The Lighting Loft - Atlanta Georgia

50" Custom 6 Light Fixture



18" Outer Shades
20" Center Shade
6" Drop
Oxidized Bronze
Finish



Sprouts Farmers Market - Phoenix Arizona



Sprouts Farmers Market Corporate Headquarters Phoenix AZ



BD-NY Hospitality Show 2015
Jacob Javits Center New York City



The Pix Lounge Mini Pendants and Table Lamps



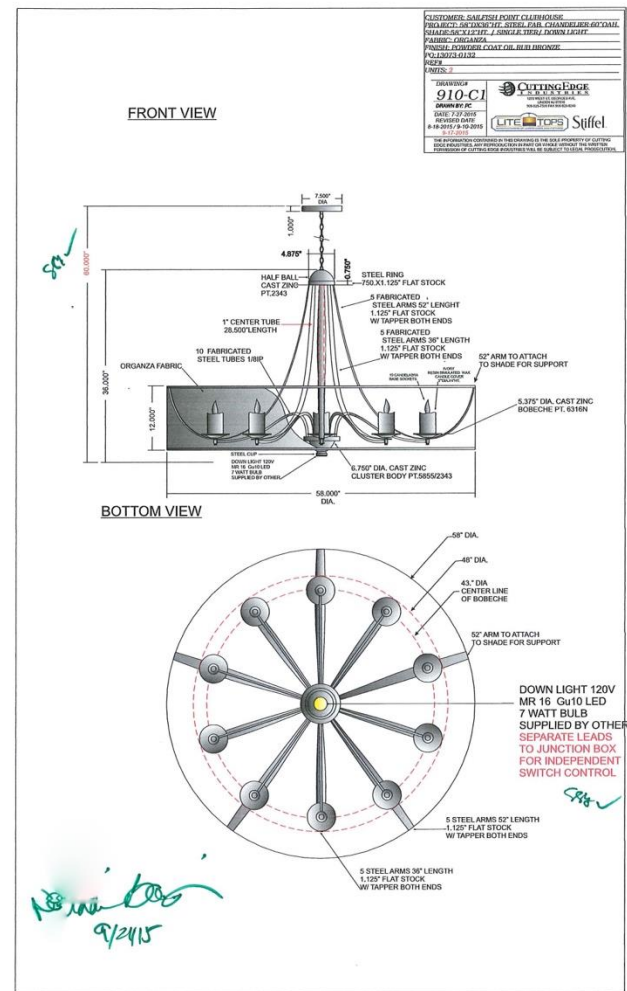
PIX Lounge Fixture -3 Sections – 18' x 8'



Sailfish Point Golf Club – Stuart Florida



Peacock & Lewis Architects - Palm Beach
 Custom 58" dia x 36" ht
 10 Arm with Down Light
 Organza Shade & Wax Candle Covers



Sailfish Point Golf Club - Stuart, FL



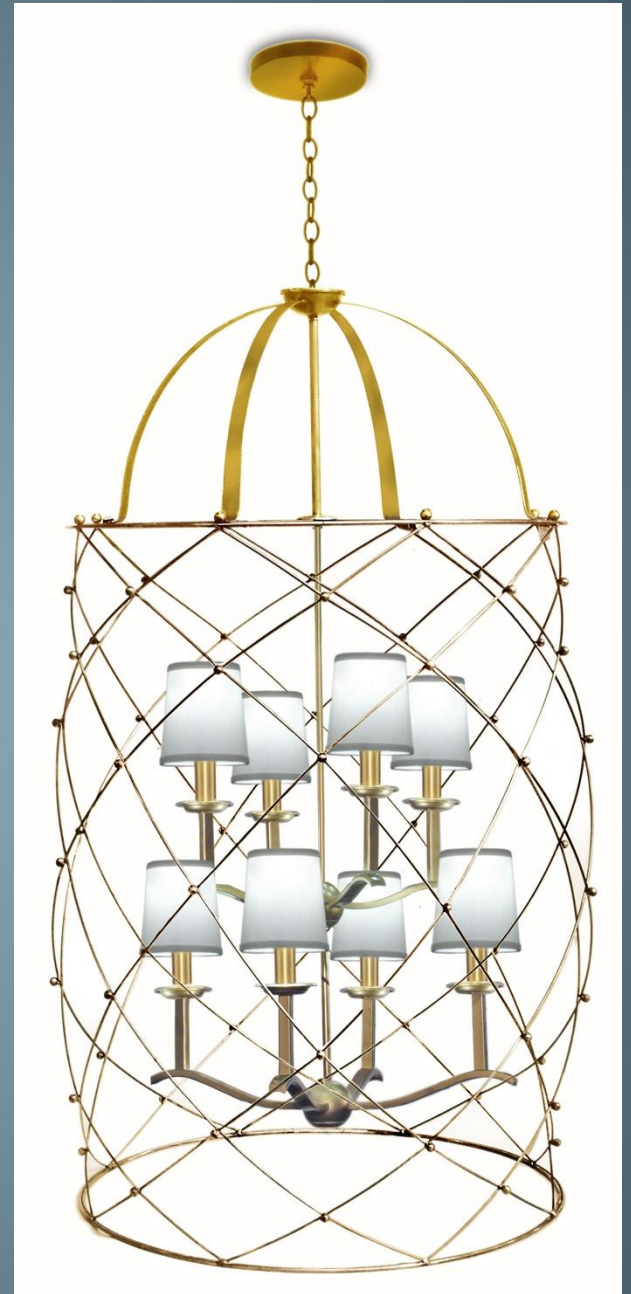
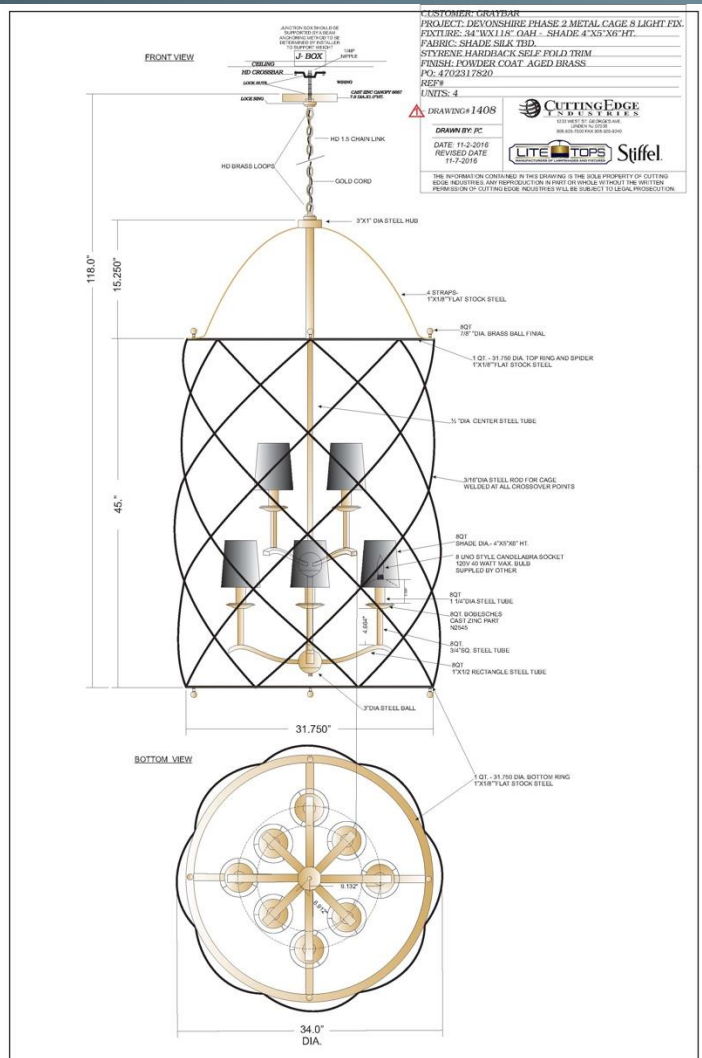


Devonshire Retirement Community Phase 2

Custom Metal 4 over 4 Light Caged Pendant

Powder Coated
Aged Brass
Finish

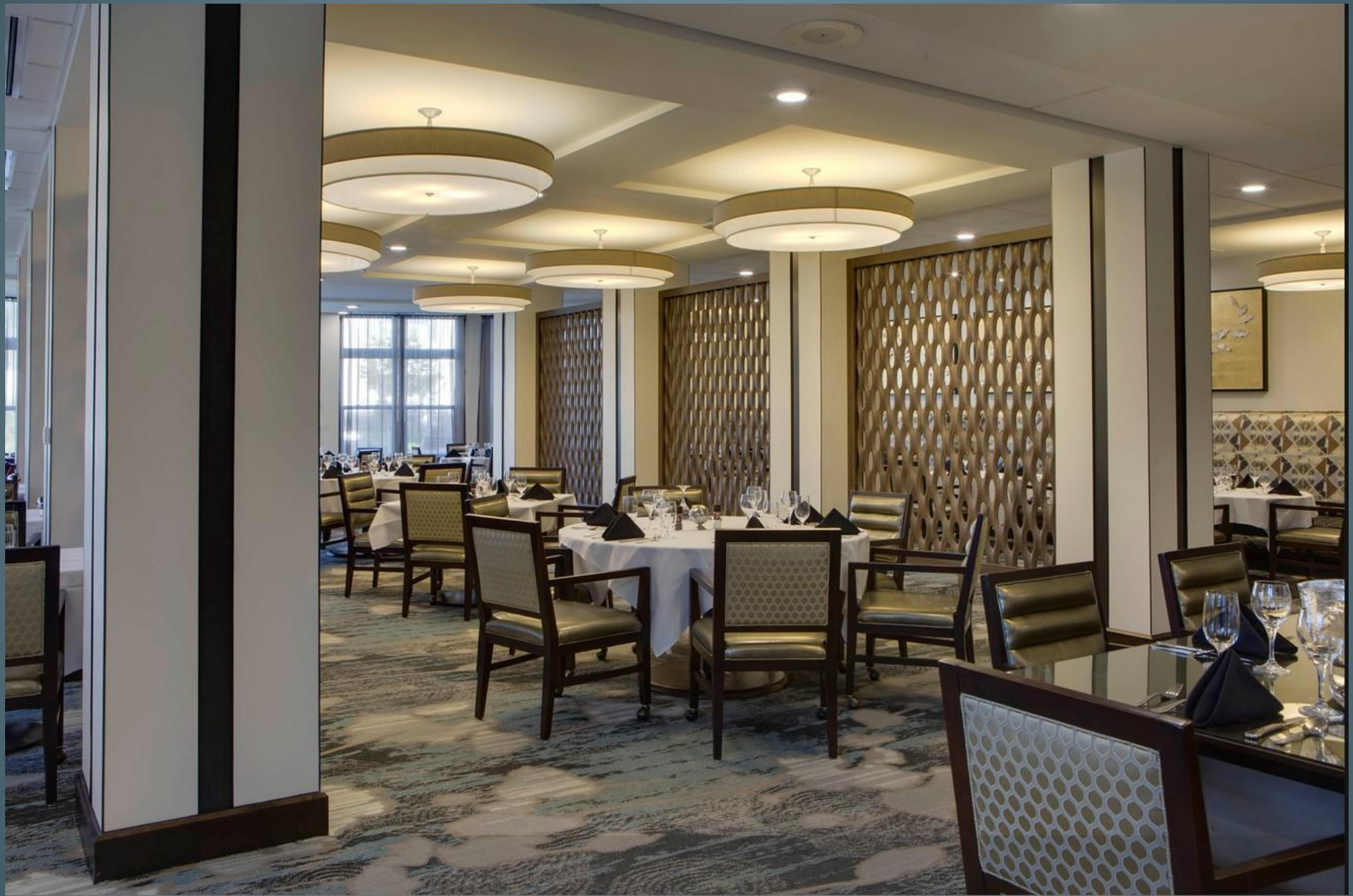
34" Height
118" OAH





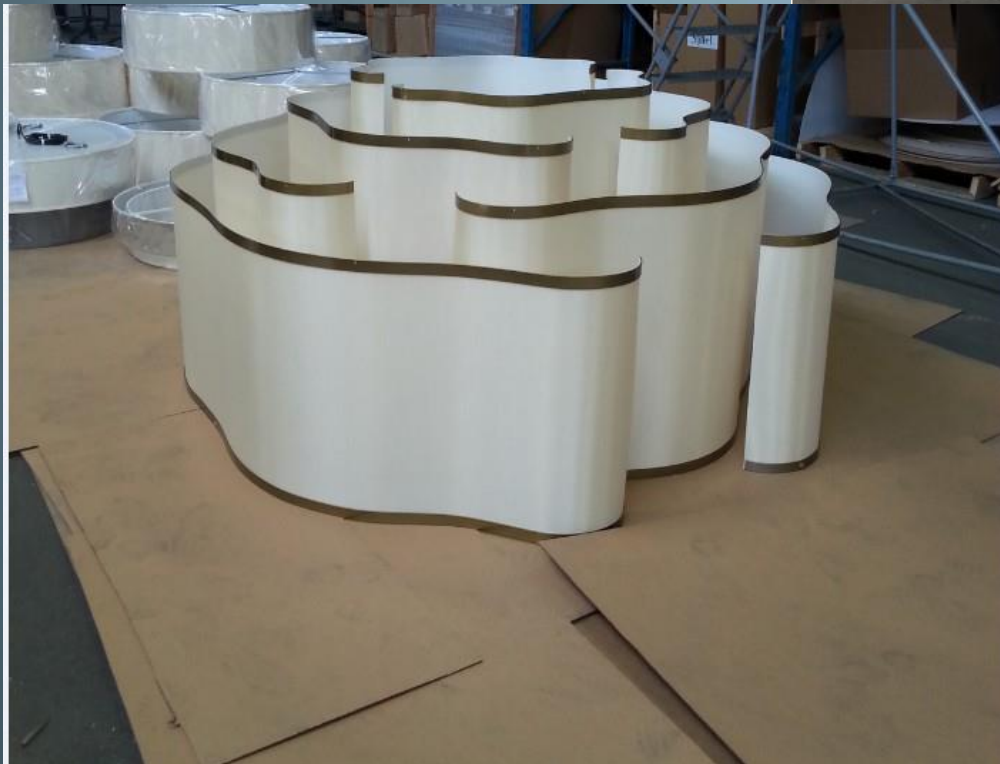
Devonshire Retirement Community at PGA National Palm Gardens, FL





Delamar Hotel
Custom Fixture

Custom Design
Custom Fabrication
Custom Finish



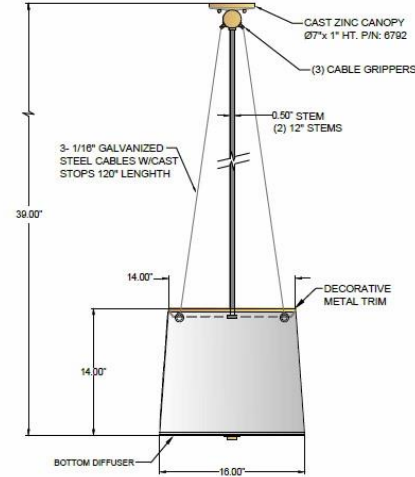
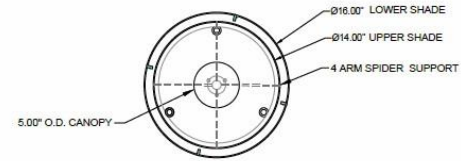
Custom Fabricated Hardback
Shade
Hand Applied French Gold
Finish

Delamar Hotel – Greenwich, CT



Delamar Hotel – Greenwich, CT

Cream Aberdeen Shade Material
French Gold Finish
16" x 14" x 16" Shade

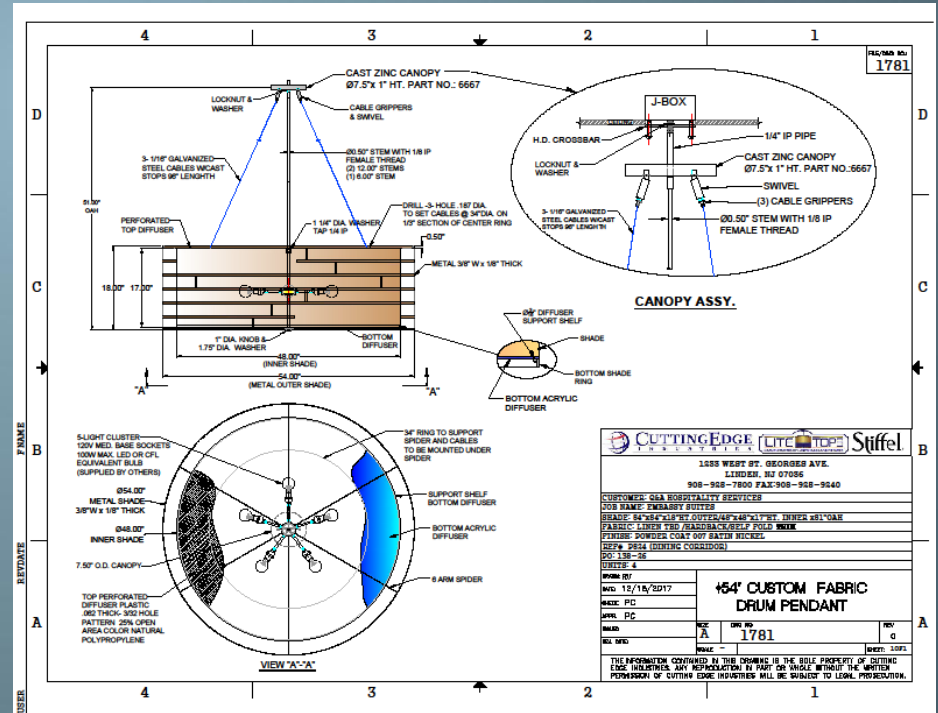




54" Custom Laser Cut Fixture

Cable Suspended
LED Lamps
Satin Nickel Finish

Laser Cut Frame 3/8" w x 1/8" thick
48" Inner Shade
Top and Bottom Diffusers



Embassy Suites and Conference Center – Noblesville, IN



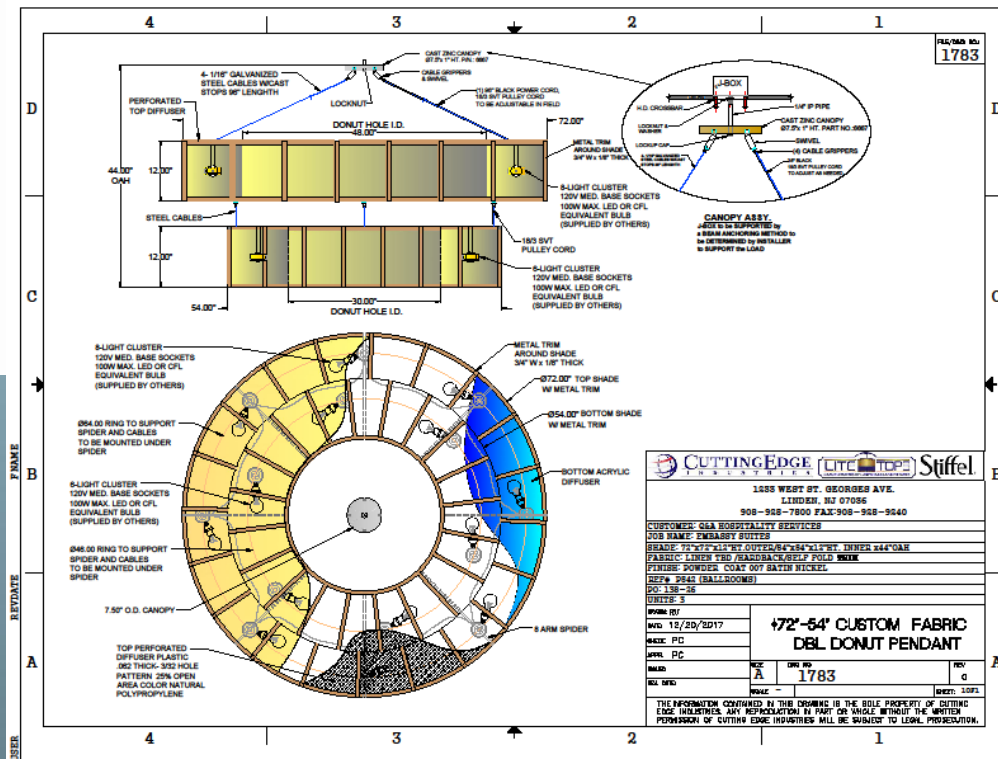
Custom 72"- 54" Twin Tier Fixture

1/16" Steel Cable Suspended
LED Lamping
Satin Nickel Finish



Satin Nickel Metal Frame
Linen Hardback Fabric

LED Lamping
Perforated Top Diffuser
Acrylic Bottom Diffuser



Embassy Suites and Convention Center – Noblesville, IN

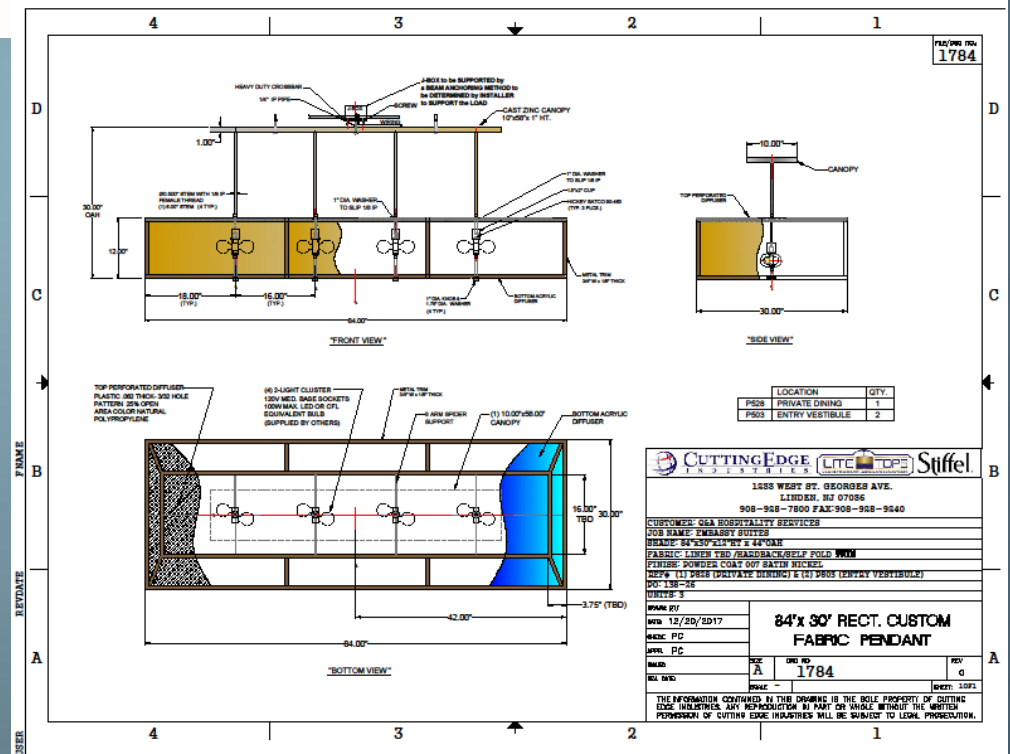




Custom 84" x 30" Metal & Fabric Pendant Fixture

Satin Nickel Frame
Linen Hardback Fabric

LED Lamping
Perforated Top Diffuser
Acrylic Bottom Diffuser



Embassy Suites and Convention Center – Noblesville, IN



Acoustic Pendants in Production



Custom Acoustic Pendant

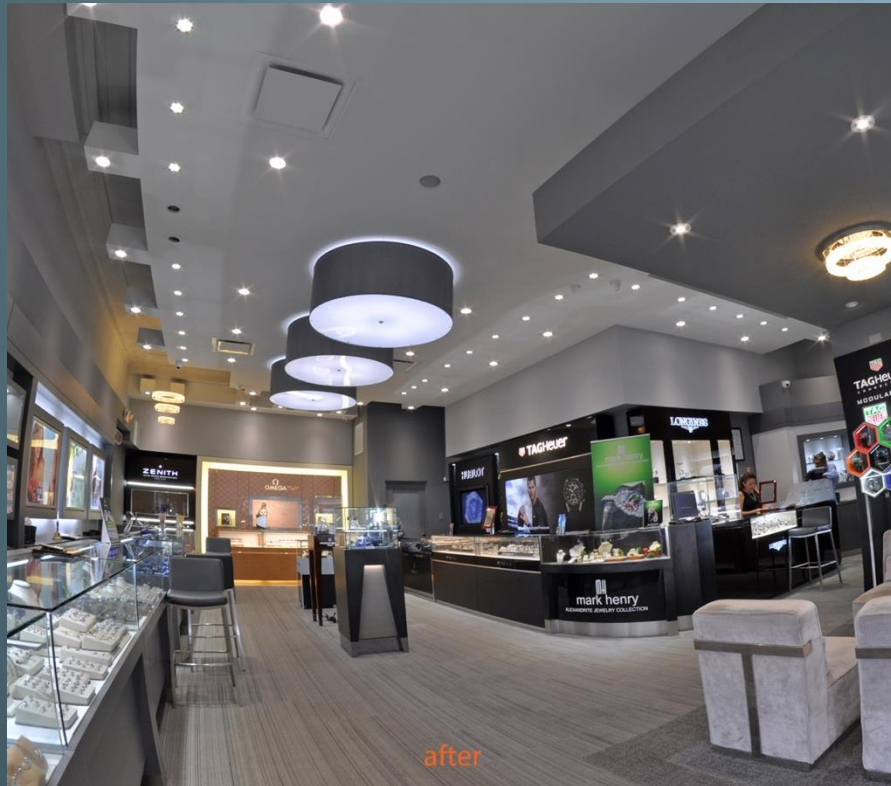


Blue Diamond Jewelry Store – Old San Juan , Puerto Rico

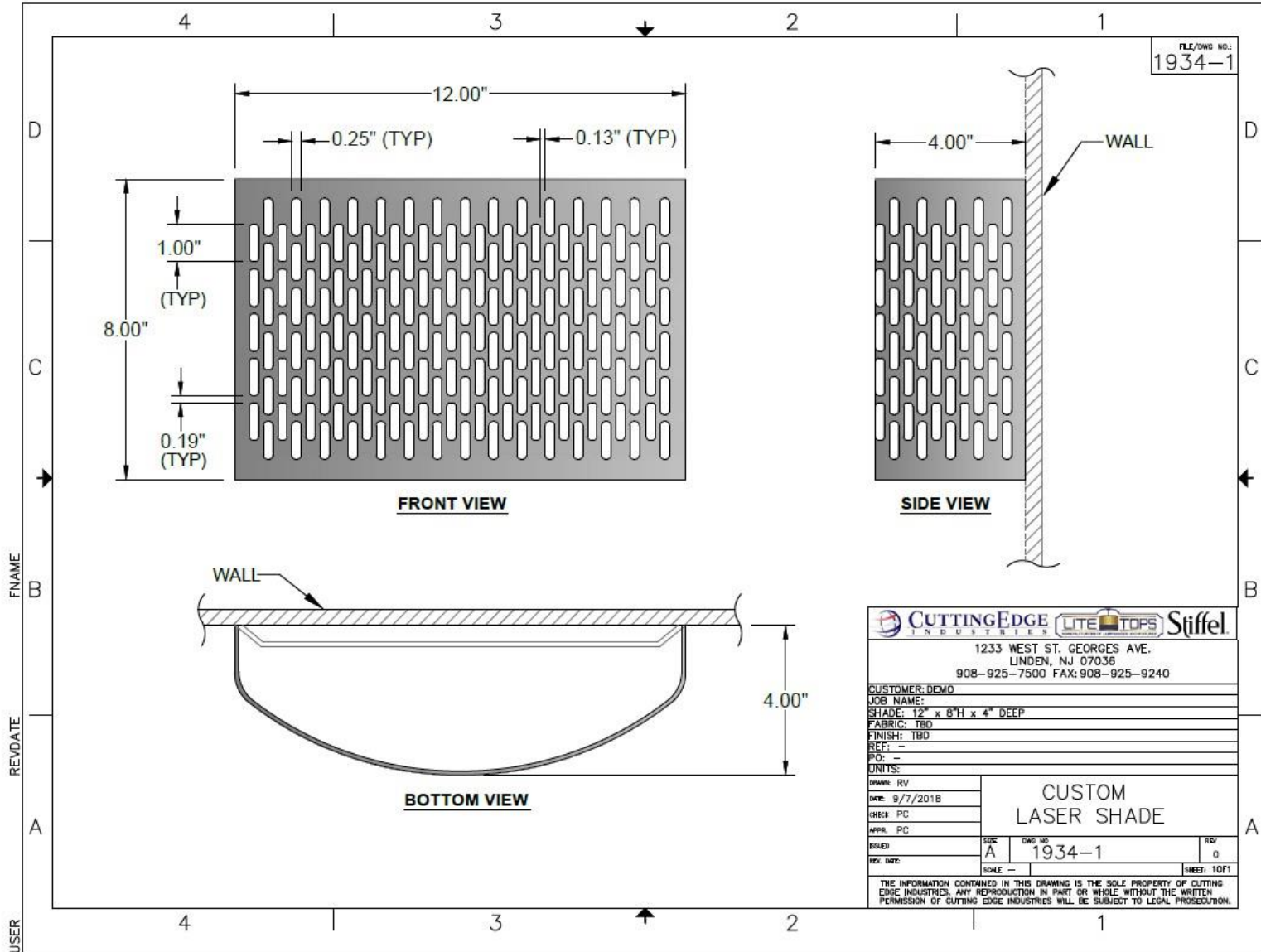


after

Custom Drum Pendants



NEW – Laser Cut Pendants and Sconces





Made to Order



MANUFACTURERS OF LAMPSHADES AND FIXTURES



LCB Bingham Senior Living 7x7 by Litetops Bingham, NY



Aspen at Melford 8' Custom by Lite Tops Bowie, MD







Foxwoods Resorts and Casinos 5' wide custom by LiteTops Mashantucket, CT









Bourbon and Branch 19' by LiteTops NY,NY





33rd Street Restaurant 5' Custom Sconce by Litetops NY, NY



Brambleton Performing Arts Center 8' Double Chandeliers by Lifetops Ashburn, VA



Bombay Restaurant By LiteTops National Harbor







Mas Fuego Restaurant 6' custom by Litetops NY, NY





CAUTION
Eye protection
must be worn
in this area





Stiffel[®]

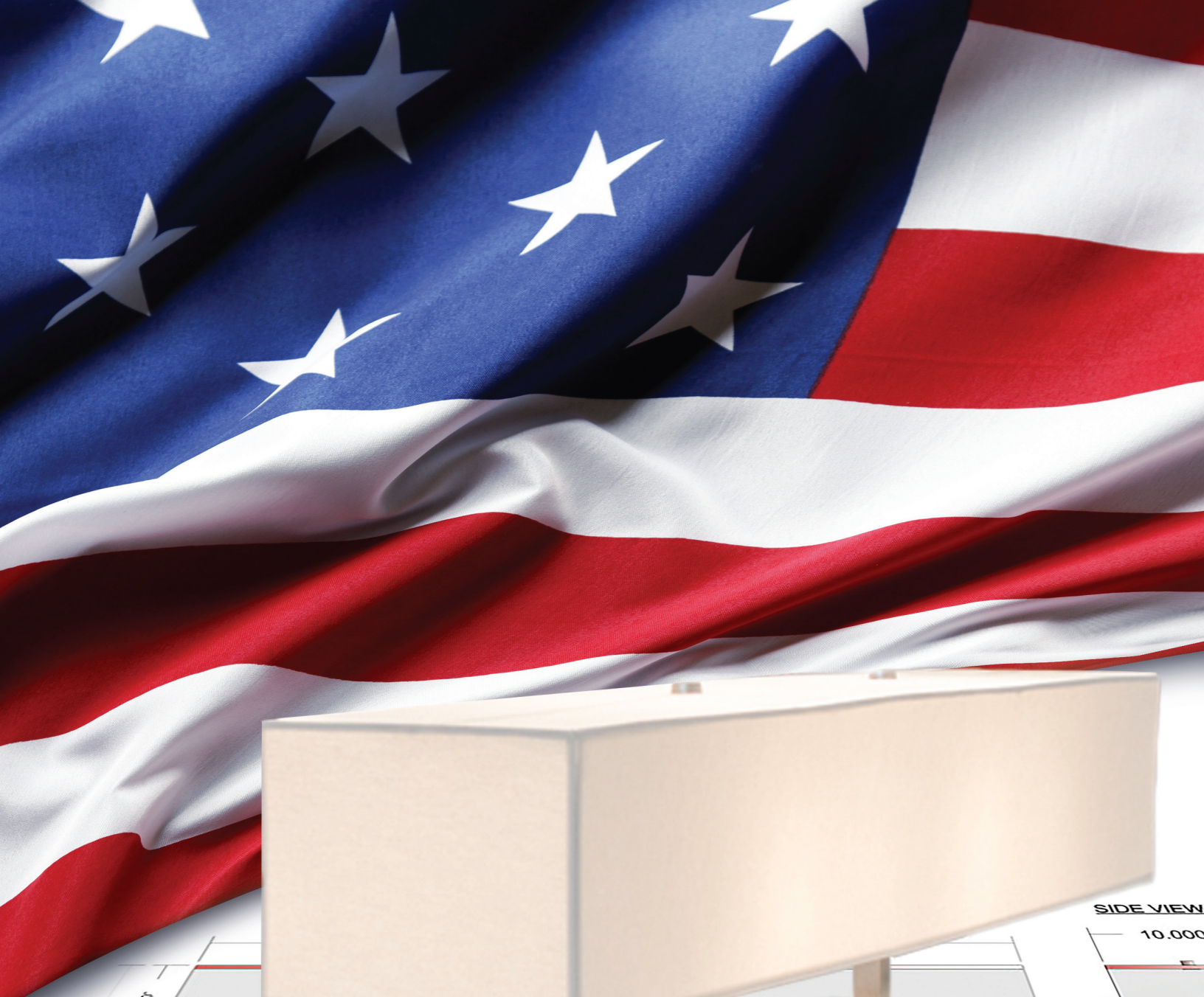
HOSPITALITY



MADE IN AMERICA

www.stiffel.com

2024





STIFFEL HOSPITALITY

Stiffel has been an industry leader in manufacturing lighting products for over 80 years. One of the finest American made lighting brands, all products are made in the USA by our staff of talented craftspeople, using only the finest materials. We specialize in servicing the hospitality and commercial markets with both standard catalog items, as well as custom made products.



We work collaboratively with hotel operators, designers, architects and contractors to help successfully complete projects of all sizes, whether it be one or even one thousand pieces. Our experience and flexibility make us the ideal factory to work with, when dealing with tight lead times and budget constraints.

Each and every product shown in this catalog can be customized by finish, fabric or even size. All custom client designs are welcome, for us to quote.







CONTENTS

About Us	3
Manufacturing Process	6-7
Tray Floor Lamps	8-11
Floor Lamps/Table Lamps Sets	12-29
Floor Lamps	27-29
Bolt Down Lamps	30-35
Table Lamps	36-79
Desk Lamps	80-91
Candle Lamps	92-98
Wall Fixtures	99-120
Wall Fixtures/Reading Lights	121-125
Name Plate/Wall Fixtures	126-129
Custom Lighting	130
Stiffel Company History	131
Index	132-133
Finish Codes	133

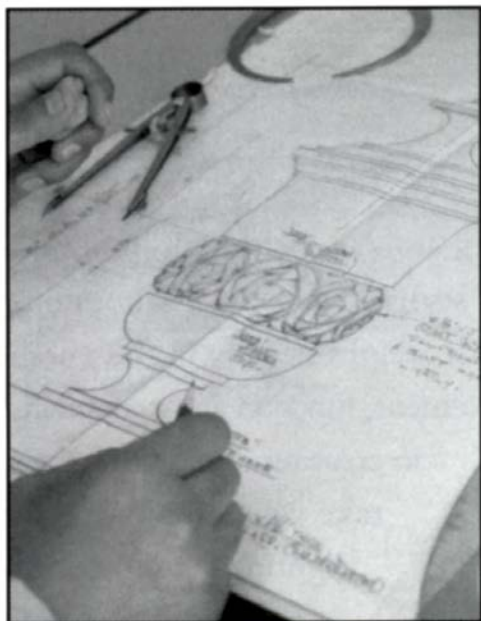
Stiffel®

The Stiffel Difference

Many factors combine to make the Stiffel Difference: integrity of design, hand craftsmanship and use of the finest materials. Made in the USA, every Stiffel lamp is an original, created by talented designers and skilled artisans. A Stiffel lamp has a rare quality that transcends the strictly utilitarian and goes beyond the merely decorative.

The purchase of a Stiffel lamp is one of the finest investments you could make for your home. Of course, there is the obvious beauty and form of the piece, but that is just the beginning. A Stiffel lamp is a work of art.

To truly appreciate the beauty of a Stiffel lamp, one must take in each detail and consider the hours of expert craftsmanship that created it: the design, the carving, the finish. A close study reveals the distinguishing value of a Stiffel. It takes dozens of precise steps to achieve this beauty that, in the end, satisfies the tastes and aesthetics of even the most discriminating.



DESIGN

A Stiffel lamp begins with a vision. Each Stiffel lamp evolves from an original design created by our own artists. They take their inspirations from artifacts, architecture or works of art. New designs are scrutinized to insure that they will measure up to Stiffel's standards. Many of our designs are so unique, they are protected by copyrights.



MOLD MAKING

The artist's concepts are brought to life by skilled artisans in the mold making process. First, a three-dimensional plaster model is carefully created to serve as a prototype. Every detail is captured and every nuance is faithfully re-created in the model. From this, a relief-metal mold is made—a finely-crafted reproduction which is machined by hand to insure a flawless fit and appearance. After a cast-iron mold has been produced and thoroughly inspected, it can be released for initial production.



CASTING

Hand casting begins where a specially formulated molten metal alloy is poured by hand into the mold. Compare the weight of a Stiffel casting to any other lamp. Many of our competitors add weights to the bottom of their lamps to match the substance that is cast right into a Stiffel. Extraordinary effort is taken to assure that each casting is as close to perfect as possible. Craftsmen—many with more than 20 years of experience—take special pride in their work. When the castings are removed from the mold, the finish is still dull with a rough and grainy texture. Each piece must then be polished repeatedly to achieve the unique Stiffel finish.

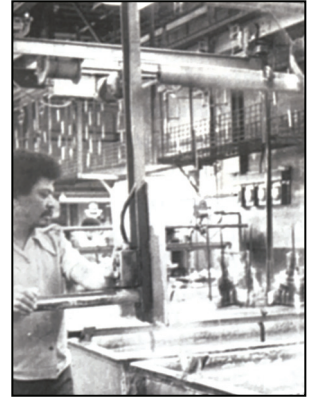
POLISHING

Next, the casting seams are smoothed and design details are enhanced through a process called skiving. Many lamp makers consider this step unnecessary, but it is mandatory for a lamp that bears the Stiffel name. Once machined, each part is hand-polished to a radiant shine through a minimum of three polishing operations by skilled artisans.



PLATING

Castings are then taken through a special cleaning and plating process that is uniquely Stiffel. Further cleaning and etching prepares the parts for staining—a process that has been developed and refined over half a century. Some special finishes may require as many as twenty separate immersions in special baths and rinses. Traditional designs undergo a treatment where the brass is burnished to an antique patina. First the brass is thoroughly oxidized in special solutions, then hand-buffed to remove some of the antiquing, revealing the warm, natural beauty of the brass.



FINAL ASSEMBLY

Next, castings are assembled and a specially formulated lacquer is applied to preserve and protect the finish. Designs that require it are embellished and enhanced by hand antiquing—another detail that makes that “Stiffel Difference.”



FINISHING

The castings are then hand-finished in an operation known as “highlighting.” Using a soft-cloth buffing wheel and a special buffing compound—jeweler’s rouge, in some cases—a highly skilled craftsman carefully buffs the casting surface to create a rich, warm finish that is as durable as it is distinctive. Stiffel creates a finish that is untouched in the industry.

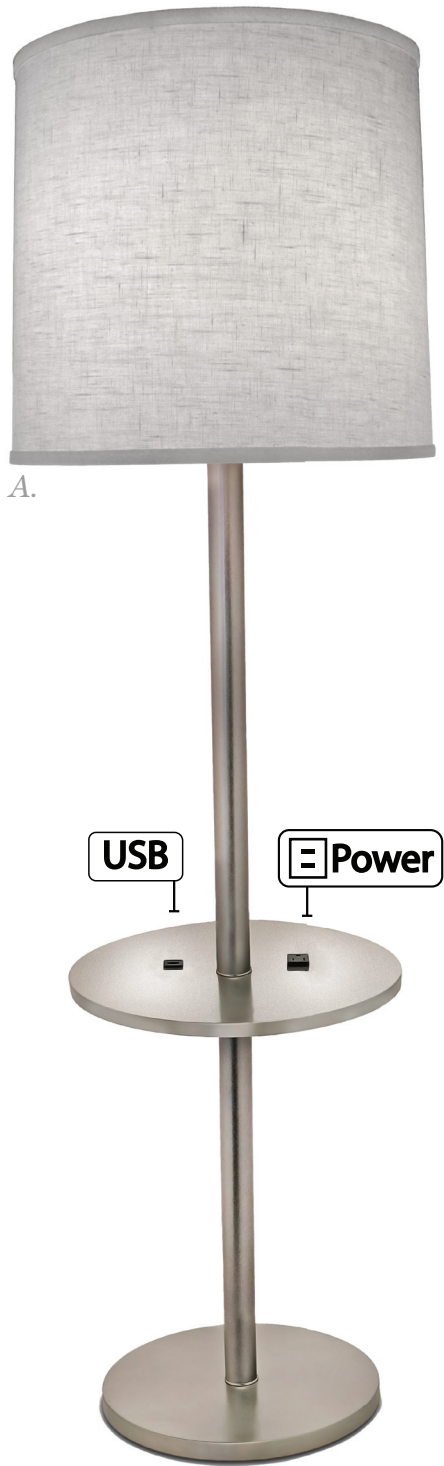


WIRING & TESTING

Each lamp is wired using only the finest of electrical components. A felt bottom is applied to prevent scratching. For a Stiffel lamp to leave the factory, it must pass the industry’s most rigorous standard for quality.

TRAY FLOOR LAMPS





A.

USB Power



B.

USB Power

- A. TRFL-A1005-SN**
 13" Dia Acrylic Tray Floor Lamp
 Finish: Satin Nickel/Opal Acrylic
 Height: 60"
 Shade Material: Cream Aberdeen
 Size: 15"x 16"x 15"
 Switch: 3 Way
 Wattage: 150 W Max
 Convenience Outlet & USB Port Included

- B. TBL-A1005-SN**
 18" Diameter Acrylic Tray Table
 Height: 30"
 Finish: Satin Nickel/Opal Acrylic
 Convenience Outlet & USB Port Included





A.



B.

A. **TRFL-A065-N7685-OB**
13" Dia Metal Tray Floor Lamp
Finish: Oxidized Bronze
Height: 62"
Shade Material: Cream Aberdeen
Size: 17" x 18" x 12"
Switch: 3 Way
Wattage: 150 W Max

B. **TRFL-6654-6685-OB**
13" Dia Metal Tray Floor Lamp
Finish: Oxidized Bronze
Height: 62"
Shade Material: Cream Aberdeen
Size: 17" x 18" x 12"
Switch: 3 Way
Wattage: 150 W Max

FLOOR LAMPS/TABLE LAMP SETS





A. FL-A065-N3760-GM
Floor Lamp
Finish: Gun Metal
Height: 63"
Shade Material: Global White
Size: 17" x 18" x 12"
Switch: 3 Way
Wattage: 150 W Max



B. TL-N3758-N3759-GM
Table Lamp
Finish: Gun Metal
Height: 30"
Base: 9"
Shade Material: Global White
Size: 14" X 15" X 10"
Switch: ADA Rocker
Socket: Medium Based
Convenience Outlet in Base (optional)





A.

- A. TL-6667-4TUB-BKG**
Table Lamp
Finish: Matte Black & Polished Gold
Height: 30"
Shade Material: White Aberdeen/Black Trim
Size: 12 X 13 X 12
Switch: ADA Rocker
Wattage: 100 W Max
Convenience Outlet in Base (optional)



B.

- B. FL-A1005-4TUB-BKG**
Floor Lamp
Finish: Matte Black & Polished Gold
Height: 63"
Shade Material: White Aberdeen/Black Trim
Size: 14" X 15" X 15"
Switch: 3 Way
Wattage: 150 W Max



A.

A. FL-6654-AC9848-GLB
Floor Lamp
Finish: Gloss Light Blue
Height: 63"
Shade Material: White Butcher Linen
Size: 17" x 18" x 12"
Switch: ADA Rocker in Stem
Wattage: 150 W Max



B.

B. FL-EA1-A630-ESP
Floor Lamp
Finish: Espresso
Height: 60"
Shade Material: White Camelot
Size: 16" x 16" x 13"
Switch: ADA Rocker in Stem
Wattage: 150 W Max

BOLT DOWNS





Hampton Inn & Suites
Green River, WY



BOLT DOWN LAMPS:

Bolt Down Lamps are ideal for environments where the lamp needs to be secured to a flat surface, such as a table or countertop. Each lamp can be ordered with components that meet the specifications of the surface they are being secured to. They are ideal for healthcare, hotel common areas and cruise ship settings and are fully customizable.

A. TL-N8161-42H-ORB

Common Area Lamp
Finish: Oil Rubbed Bronze
Height: 42"
Base: 7 3/4"
Shade Material: Beige Waxed Parchment
Size: 7 1/2" x 7 1/2" x 10"
Switch: ADA Rocker
Socket: (2) 60 Watt Max Medium Based
Bolt Down Kit Option Available

B. TL-N8161-30H-ORB

Common Area Lamp
Finish: Oil Rubbed Bronze
Height: 30"
Base: 7 3/4"
Shade Material: Beige Waxed Parchment
Size: 7 1/2" sq x 7 1/2" sq x 8"
Switch: ADA Rocker
Socket: (2) 60 Watt Max Medium Based
Bolt Down Kit Option Available

LED



A. TL-6637-WOOD-OB-LED
Common Area Lamp
Finish: Oil Rubbed Bronze/Wood
Height: 18"
Base: 7" Sq
Shade Material: Perforated metal
Size: (36" X 6") x (36" x 6") x 6"
Switch: ADA Rocker
LED Strips, 2700K, 12 W
Convenience Outlet in Base (optional)

B. TL-1920-2LT-BD
Bolt Down Lamp
Finish: Champagne
Height: 18"
Base: 4 1/2" Width: 20"
Shade Material: Steel
Size: 4" x 6" x 5" Steel
Switch: ADA Rocker
Socket: (2) Medium Based



BDNY Show, New York, NY



- A. **TL-6533X-ORB**
Common Area Lamp
Finish: Oil Rubbed Bronze
Height: 13"
Base: 22" x 6"
Shade Material: Cream Aberdeen
Size: (48" X 10") x (48" x 10") x 8"
Switch: ADA Rocker
Socket: (4) Medium Based
Convenience Outlets in Base (optional)
Acrylic Top Diffuser Included

TABLE LAMPS





A. TL-N8161-ORB

Table Lamp
Finish: Oil Rubbed Bronze
Shade Material: Natural Bombay
Height: 26" Base: 7 1/2"
Shade: 7 1/2" sq x 7 1/2" sq x 21"
Materials: Metal w/ Hardback Shade
Switch: ADA Rocker
Convenience Outlet in Base (optional)

B. TL-6637-ORB

Table Lamp
Finish: Oil Rubbed Bronze
Shade Material: Natural Bombay
Height: 25" Base: 7"
Shade: 7" sq x 7" sq x 21"
Materials: Metal w/ Hardback Shade
Switch: ADA Rocker
Convenience Outlet in Base (optional)



A.

A. TL-6667-A620-SN
Table Lamp
Finish: Satin Nickel
Height: 31"
Base: 7 1/2"
Shade Material: Cream Aberdeen
Size: 12" X 15" X 10"
Switch: ADA Rocker
Socket: Medium Based
Convenience Outlet in Base (optional)



B.

B. TL-6678-A057-SN
Table Lamp
Finish: Satin Nickel
Height: 33"
Base: 6 1/4"
Shade Material: Cream Aberdeen
Size: 12" X 15" X 10"
Switch: ADA Rocker
Socket: Medium Based
Convenience Outlet in Base (optional)



A.

A. TL-6673-6674-SN
Table Lamp
Finish: Satin Nickel
Height: 29"
Base: 7 1/2"
Shade Material: Global White
Size: 14" X 15" X 10"
Switch: ADA Rocker
Socket: Medium Based
Convenience Outlet in Base (optional)



B.

B. TL-A991-A092-SN
Table Lamp
Finish: Satin Nickel
Height: 31"
Base: 6 1/2"
Shade Material: Global White
Size: 14" X 15" X 10"
Switch: ADA Rocker
Socket: Medium Based
Convenience Outlet & USB Port in Base (optional)









A.



B.



C.

A. TL-6678-SN

Table Lamp
 Finish: Satin Nickel
 Height: 29"
 Base: 6 1/4"
 Shade Material: White Linen
 Size: 13" X 14" X 10"
 Switch: ADA Rocker
 Socket: Medium Based
 Convenience Outlet & USB
 in Base (optional)

B. TL-K335-TUBX2-SN

Table Lamp
 Finish: Satin Nickel
 Height: 26"
 Base: 10" x 5"
 Shade Material: Off White Butcher Linen
 Size: (10" X 14") X (11" X 15") X 9"
 Switch: ADA Rocker
 Socket: Medium Based
 Convenience Outlet & USB Port
 in Base (optional)

C. TL-6678-AUR-SN

Table Lamp
 Finish: Satin Nickel
 Height: 28"
 Base: 6 1/4"
 Shade Material: Metal/White Linen
 Size: 12" x 12" x 3
 outer/11" x 11" x 9" inner
 Switch: ADA Rocker
 Wattage: 100 W Max
 Convenience Outlet & USB
 Port (Optional)

DESK LAMPS





A.



B.

A. DL-K335-K515-GWH

Desk Lamp
 Finish: Satin Nickel/Gloss White
 Height: 22" Base: 10" x 5"
 Shade Material: OffWhite Butcher Linen
 Size: (6" X 10") X (9" x 13") x 8 1/2"
 Switch: ADA Rocker
 Socket: (2) 60 W Max Medium Based
 Convenience Outlet in Base (optional)

B. DL-K335-6491-SN

Desk Lamp
 Finish: Satin Nickel
 Height: 22" Base: 10" x 5"
 Shade Material: OffWhite Butcher Linen
 Size: (14" X 10") X (14" x 10") x 8"
 Switch: ADA Rocker
 Socket: (2) 60 W Max Medium Based
 Convenience Outlet in Base (optional)



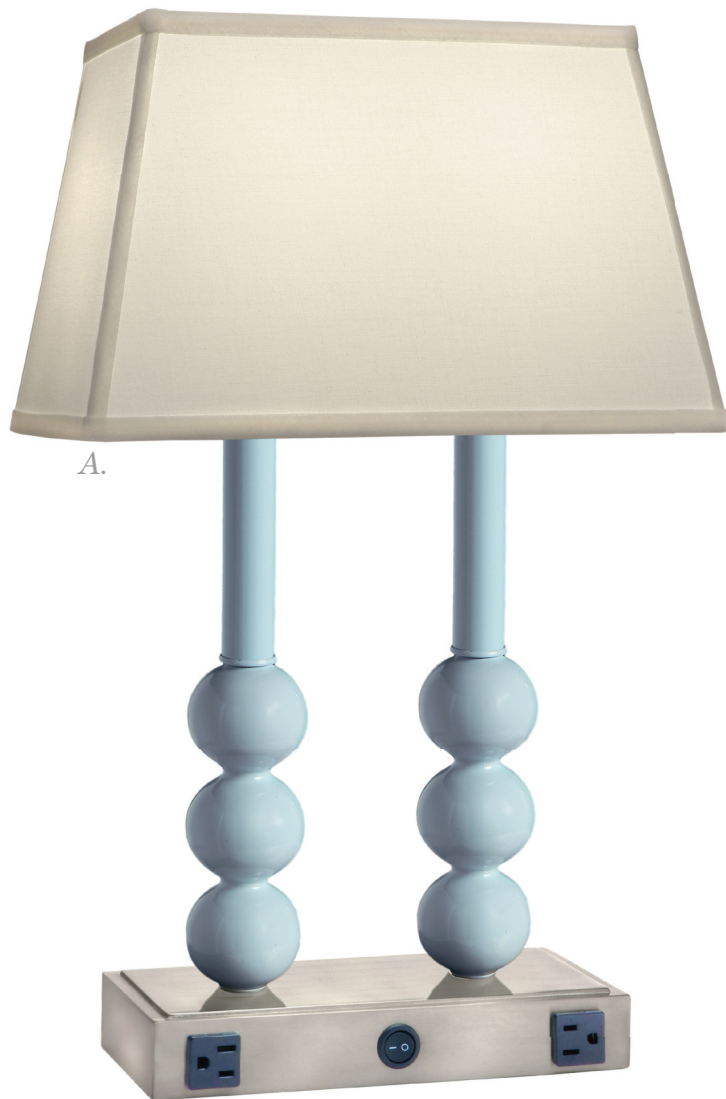
A.



B.

- A. DL-6215-1355-SB**
 Desk Lamp
 Finish: Satin Brass
 Height: 21" Base: 6 3/4" x 5 1/2"
 Shade Material: Black Butcher Linen
 Size: (7" X 10") X (10" x 15") x 9"
 Switch: ADA Rocker
 Socket: (2) 60 W Max Medium Based
 Convenience Outlets in Base (optional)

- B. DL-7517-1355-AB**
 Desk Lamp
 Finish: Antique Brass
 Height: 20 5/8" Base: 7 5/8" x 6 1/4"
 Shade Material: Oyster Silksheen
 Size: (6" X 10") X (9" x 13") x 8"
 Switch: ADA Rocker
 Socket: (2) 60 W Max Medium Based
 Convenience Outlets in Base (optional)



A.



B.

A. DL-K335-K9143-LB
 Desk Lamp
 Finish: Light Blue/Satin Nickel
 Height: 23" Base: 10" x 5"
 Shade Material: Off White Butcher Linen
 Size: (6" X 10") X (9" x 13") x 8 1/2"
 Switch: ADA Rocker
 Socket: (2) 60 W Max Medium Based
 Convenience Outlet & USB Port in Base (optional)

B. DL-K335-C521-PHB
 Desk Lamp
 Finish: Polished Honey Brass/ Matte Blk
 Height: 23" Base: 10" x 5"
 Shade Material: Off White Butcher Linen
 Size: (6" X 10") X (9" x 13") x 8 1/2"
 Switch: ADA Rocker
 Socket: (2) 60 W Max Medium Based
 Convenience Outlet & USB Port in Base (optional)

CANDLE LAMPS





A. CL-A018-A051-DW
 Candle Lamp
 Finish: Distressed White
 Height: 10"
 Shade Material: Off White Silk Shantung
 Shade Size: 3 1/2" x 5" x 4"
 LED Tea Light Included
 Also Available in:
 Switch: Line Cord On/Off
 Wattage/Bulb: 40 W Max Candelabra



B. CL-A098-A525-RB
 Candle Lamp
 Finish: Roman Bronze
 Height: 10"
 Shade Material: Off White Silk Shantung
 Shade Size: 3 1/2" x 5" x 4"
 LED Tea Light Included
 Also Available in:
 Switch: Line Cord On/Off
 Wattage/Bulb: 40 W Max Candelabra



C. CL-AC4892-PW
 Candle Lamp
 Finish: Pewter
 Height: 10"
 Shade Material: Off White Silk Shantung
 Shade Size: 3 1/2" x 5" x 4"
 LED Tea Light Included
 Also Available in:
 Switch: Line Cord On/Off
 Wattage/Bulb: 40 W Max Candelabra



D. CL-C155-BGBZ
 Candle Lamp
 Finish: Belgian Bronze
 Height: 8 1/2"
 Shade Material: Off White Silk Shantung
 Shade Size: 3 1/2" x 5" x 4"
 LED Tea Light Included
 Also Available in:
 Switch: Line Cord On/Off
 Wattage/Bulb: 40 W Max Candelabra



E. CL-AC4719-PW
 Candle Lamp
 Finish: Pewter
 Height: 11 1/2"
 Shade Material: Off White Silk Shantung
 Shade Size: 3 1/2" x 5" x 4"
 LED Tea Light Included
 Also Available in:
 Switch: Line Cord On/Off
 Wattage/Bulb: 40 W Max Candelabra



F. CL-A142-5191-OB
 Candle Lamp
 Finish: Oxidized Bronze
 Height: 11"
 Shade Material: Off White Silk Shantung
 Shade Size: 3 1/2" x 5" x 4"
 LED Tea Light Included
 Also Available in:
 Switch: Line Cord On/Off
 Wattage/Bulb: 40 W Max Candelabra



A. CL-A648-OB
Candle Lamp
Finish: Oxidized Bronze
Height: 7"
Switch: Line Cord On/Off
Wattage/Bulb: 40 W Max Candelabra



B. CL-K9018-OB
Candle Lamp
Finish: Oxidized Bronze
Height: 7"
Switch: Line Cord On/Off
Wattage/Bulb: 40 W Max Candelabra

WALL FIXTURES





Specializing in Custom Patterns & sizes



MADE IN AMERICA

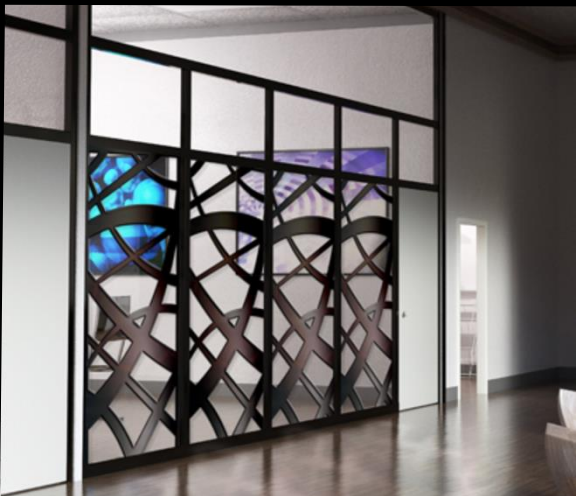
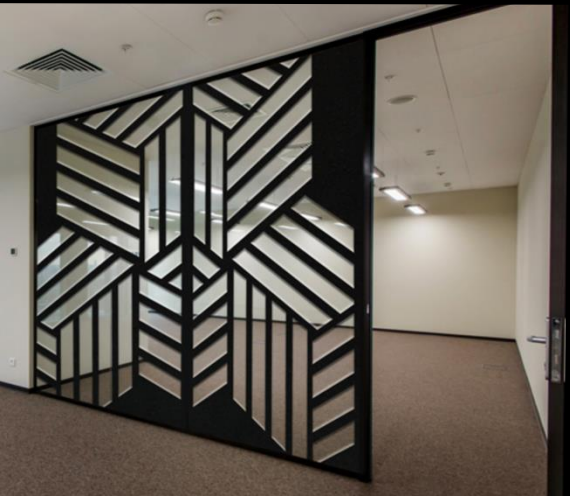
Architectural Panels
Room Dividers
Illuminated Panels
Laser Cut Wall Decor
Signage

Specializing in Custom Patterns & sizes

 **MADE IN AMERICA**



Stylish laser cut metal room dividers and partitions are a great way to create separate spaces in an open floor plan, without making structural alterations.





THANK YOU!