



CENTURY

LIGHTING | ART | DESIGN

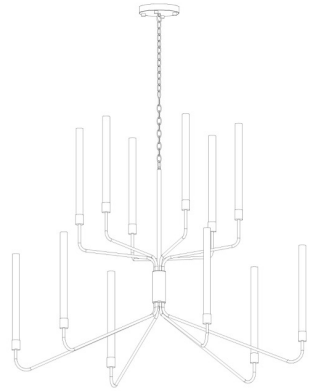






NOTES:

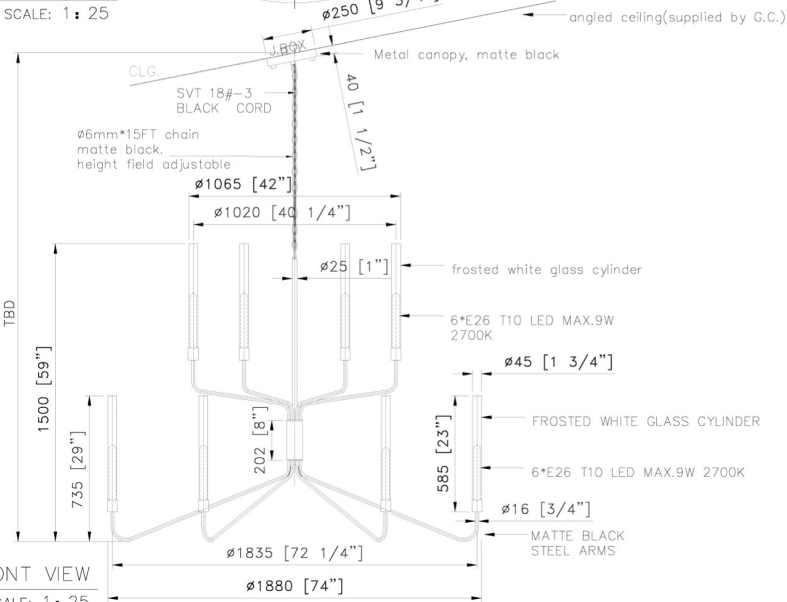
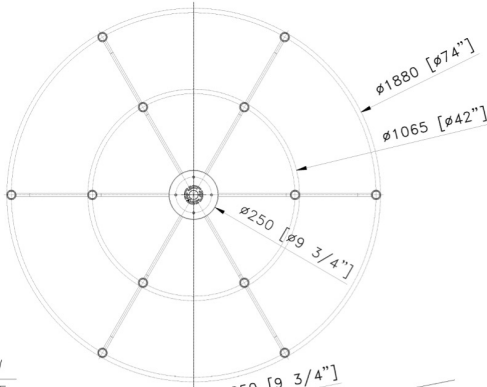
- 1)METAL:ALL EXPOSED METAL FINISH TO BE MATTE BLACK
- 2)SHADE:12PCS*FROSTED WHITE GLASS CYLINDERS.
- 3)SOCKETS:12PCSxEDISON BASE MED.120V.A.C. 60HZ. COMPATIBLE W/E26 T10 MAX.9W EA LED 2700K. DIMMABLE. BULB NOT INCLUDED
- 4)HARD WIRED
- UL/CUL APPROVED
- ***APPROX MAX. WEIGHTS: 65LBS



3D VIEW

TOP VIEW

SCALE: 1 : 25



FRONT VIEW

SCALE: 1 : 25

CUSTOM CHANDELIER@LOUNGE

ITEM NO:FX-7411 (TYPE-SK) QTY:1PC

Seabrook Village - 3000 Essex Road (Erickson)

Approval: Date: _____

With comments: _____

Signed By: _____

Estimated Leads time are contingent upon receiving approved submittals and are subject to change

Les Industries CENTURY Industries Inc.
 5645 Royalmount Ave. Dwg. #
 Montreal, Quebec, Canada H4P 2P9
 Tel: 514-842-3933 Fax: 514-842-7481
 Toll free Canada only: 1-877-842-3934
 Date: 2023/07/17 Rev: _____
 (yyyy/mm/dd) (yyyy/mm/dd)

