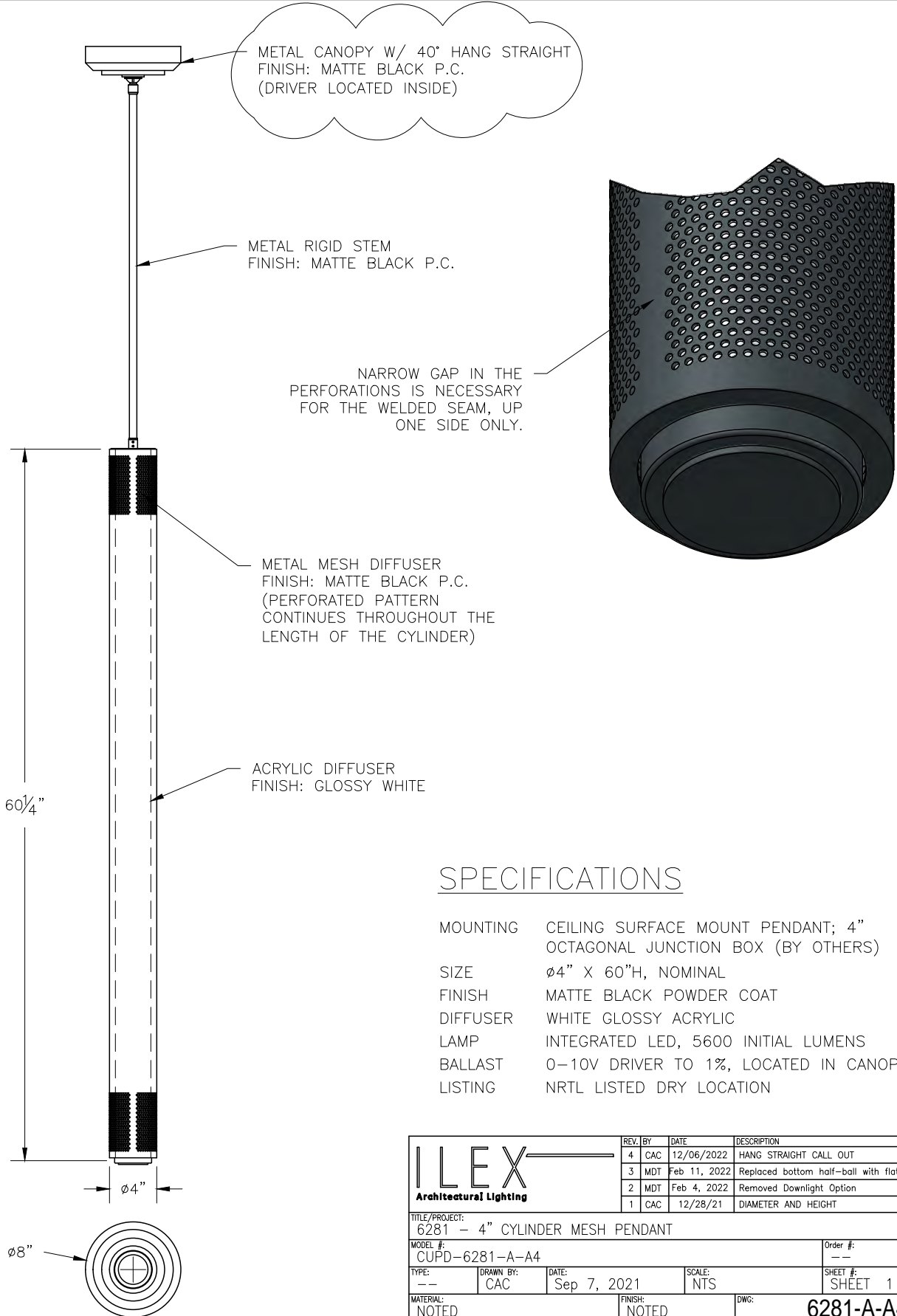


5' Tall Cylinder Mesh Pendants



- Be sure to read and understand all instruction sheets completely before beginning assembly or installation.
- All assembly and installation work must be performed by qualified personnel, in accordance with all applicable national and local building and electrical codes.
- Be aware that the weight of some fixtures may exceed the strength rating of the 4" electrical junction box or other such hardware at your site. In all cases, it is the responsibility of the contractor to properly secure the fixture to the structure, and to provide adequate support for the fixture.
- Due to constant production improvements, ILEX reserves the right to change details of the design, material and finish in any way that will not significantly alter installed appearance or reduce function or performance.

©ILEX. East Taunton, MA 02718 (508) 977-9991



SPECIFICATIONS

MOUNTING	CEILING SURFACE MOUNT PENDANT; 4" OCTAGONAL JUNCTION BOX (BY OTHERS)
SIZE	ø4" X 60"H, NOMINAL
FINISH	MATTE BLACK POWDER COAT
DIFFUSER	WHITE GLOSSY ACRYLIC
LAMP	INTEGRATED LED, 5600 INITIAL LUMENS
BALLAST	0-10V DRIVER TO 1%, LOCATED IN CANOPY
LISTING	NRTL LISTED DRY LOCATION

	REV.	BY	DATE	DESCRIPTION
	4	CAC	12/06/2022	HANG STRAIGHT CALL OUT
	3	MDT	Feb 11, 2022	Replaced bottom half-ball with flat disk
	2	MDT	Feb 4, 2022	Removed Downlight Option
1	CAC	12/28/21	DIAMETER AND HEIGHT	
TITLE/PROJECT: 6281 - 4" CYLINDER MESH PENDANT				
MODEL #: CUPD-6281-A-A4				Order #: --
TYPE: --	DRAWN BY: CAC	DATE: Sep 7, 2021	SCALE: NTS	SHEET #: SHEET 1 OF 1
MATERIAL: NOTED		FINISH: NOTED		DWG: 6281-A-A4
FILENAME: 6281-A CYLINDER PERFORATED TUBE PENDANT (REV4)				